

BUILDING/PAVEMENT SETTLEMENT POINTS

DATASHEET

MODEL EBS-16/EBS-12



building settlement point details



pavement settlement point details

OVERVIEW

The Encardio-rite EBS-16 Series is used to monitor vertical settlement in concrete and rock structures. It is ideal for buildings affected by nearby excavation, tunneling, or construction activities, helping detect structural movement and ensure safety.

The Encardio-rite EPS-12 is designed to measure vertical settlement in roads and pavements with asphalt surfaces. It helps monitor deformation and performance of road layers under traffic and environmental conditions.

DESCRIPTION

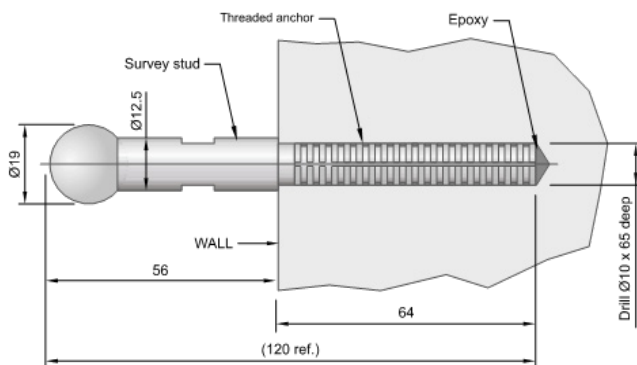
EBS-16 building settlement point

Model EBS-16 consists of a spherical reference locator with threaded bolt. The reference locator is fixed on a vertical wall or a structure to monitor settlement of structure/building.

The settlement point is pushed inside the epoxy (Hilti HY50/HY150 or equivalent) filled hole, using a rotary action, till it is around 54 mm outside the wall surface (see adjacent figure). A slot has been provided on the threaded portion of the reference locator to prevent it from being screwed out.

Extra packing and freight cost is applicable on transportation of epoxy by air. The epoxy may therefore be directly procured at user's end from any local supplier.

Extra packing and freight cost is applicable on transportation of epoxy by air. The epoxy may therefore be directly procured at user's end from any local supplier.



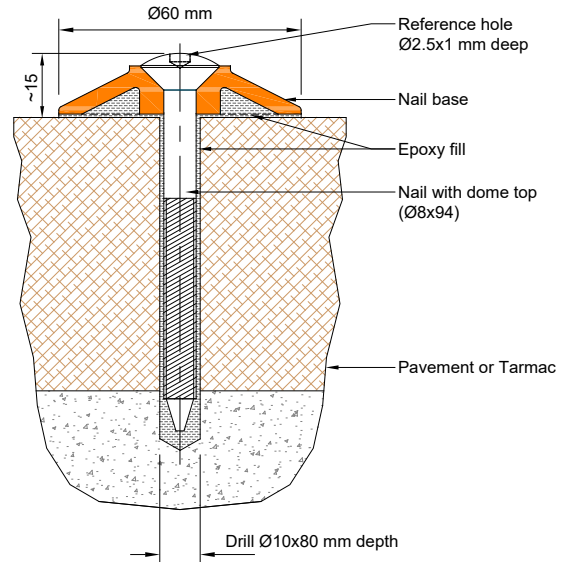
EBS-16 building settlement point details

EBS-16 building settlement point

Model EPS-12 pavement settlement point consists of a plastic tapered disc and a special retaining nail. It is suitable for use on a concrete surface, tiles or asphalt road.

Initial settlement reading for EBS-16 or EPS-12 is taken with a digital tilt meter and leveling staff.

To determine settlement, subsequent readings are compared with initial reading as reference.



EPS-12 pavement settlement point details

*All specifications are subject to change without prior notice

DATASHEET | 2101-21 R02



Dams



Mining



Tunnels



Transportation



Construction



Bridges



Landslides



Energy



Environmental Monitoring



Pipelines



Structural Health Monitoring



Smart Cities